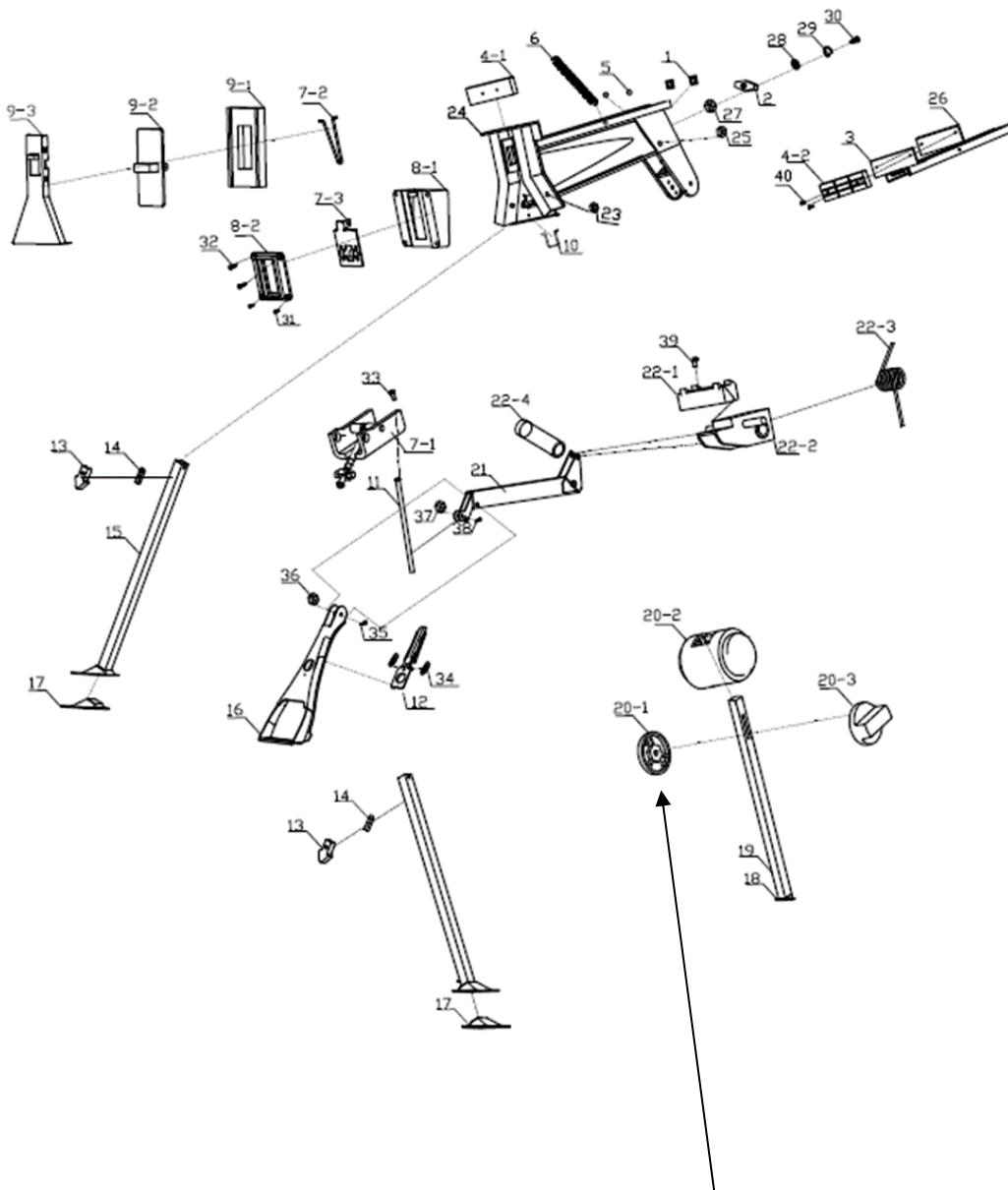


# triton® SJA100E – SUPER JAWS



Part 20-1.

NB: the shaft is missing on the diagram and in the notes

<b>No.</b>	<b>Description</b>	<b>QTY</b>
1	PLASTIC CAPS	2
2	LOCKING PLATE	1
3	TOP SLIDER	1
4.1	ANGLE PAD (FRONT SOFT JAW)	1
4.2	SOFT REAR JAWS	2
5	STEEL BALL	2
6	PULL SPRING	1
7.1	LOCK	1
7.2	LOCKING PULL RING	1
7.3	LOCKING SHEET	1
8.1	LOCKING PLASTIC PART 1	1
8.2	LOCKING PLASTIC PART 2	1
9.1	FRONT COVER PLASTIC PARTS	1
9.2	LOCK SWITCH	1
9.3	LOCK SWITCH CASING	1
10	PULL RING	1
11	LOCKING BAR	1
12	PEDAL LOCK	1
13	FRONT LEG LOCK CAP	2
14	FRONT LEG LOCK	2
15	FRONT LEGS	2
16	PEDAL	1
17	FOOT PAD	2
18	PLASTIC CAP	1
19	BACK LEG	1
20	BACK LOCK PLASTIC SET	1
20.1	BACK LOCK PART 1	1
20.2	BACK LOCK PART 2	1
20.3	BACK LOCK PART 3	1
21	MAIN FRAME	1
22.1	LOCKING TEETH	1

NB: Items 20.1, 20.2 and 20.3 are not descriptive enough – need more detail.  
Also include the shaft

<b>No.</b>	<b>Description</b>	<b>QTY</b>
22.2	TEETH CARRIAGE	1
22.3	SPRING	1
22.4	PIN	1
23	SCREW	1
24	MAIN BODY	1
25	SCREW	1
26	REAR CLAMP RUBBER PAD	1
27	M6 NUT	1
28	PAD	1
29	RESILIENT PAD	1
30	SCREW M6X15	1
31	SCREW M4X25	2
32	SCREW M4X40	2
33	SCREW M6X10	1
34	PEDEL LOCK PULL SPRING	2
35	SCREW M8X45MM	1
36	NUT M8	1
37	NUT M6	1
38	SCREW M6X30MM	1
39	SCREW M6X15	1
40	SOFT JAW STUDS	2